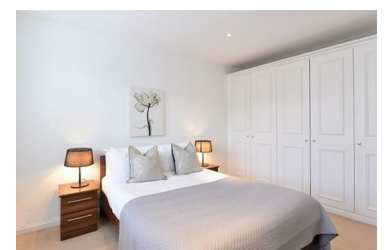
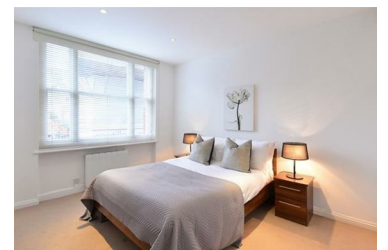




25 Hill Street, London, W1J 5NA

£3,206 Per month



Set over 421 sq ft, this one-bedroom apartment comprises of a large double bedroom with ample storage space, modern fitted bathroom, spacious reception room with rear facing views over Hay's Mews and a unique kitchenette and access to a private gated communal garden.

The apartment is in one of London's most prestigious locations, Mayfair.

The building benefits from spacious living accommodation, lift service, on-site building manager, and is nestled conveniently between two of London's parks - Hyde Park and Green Park.

London underground stations, Green Park, Bond Street and Marble Arch are all within a short stroll away.